



Whistling Winds Angus

**Annual
Production
Sale**

Monday

1:00

March 20

at the Ranch

14504 Road 6 North

Hingham, Montana

2023

Offering . . .
50 BULLS

Including 30 Heifer Bulls

8 Sons of TEF Validate 042

7 Sons of Deer Valley Growth Fund

12 Sons and Grandsons of Basin Rainmaker 4404

9 Grandsons of S A V Rainfall 6846

David Sattoriva

406-390-1471 cell

406-397-3386 home



We Believe the Mother Cow Matters

www.WhistlingWindsAngus.com

Welcome to our 17th Annual Production Sale!

As I sit and have a moment of reflection on the last year, I feel proud. First of all, I am proud of my family. Between the 4 H, basketball, football, track and countless other activities my family takes an interest in, they work extremely hard to keep this ranch operating. My wife, Katie, is the organizer; the doer. She is there day in and day out keeping the kids and me moving forward. She gets many extra chores while I am helping coach basketball. I am proud of my kids. My daughter Brea and son Riese both have excellent work ethic. They rise early every morning to strength train or work on their basketball skills. They are always willing to help when it comes to fencing, cow work and harvest. Equally so, my daughter Laynie has excelled academically and in athletics throughout her high school career and is quickly approaching graduation. In the fall Laynie will attend UM Western to major in Biology with an emphasis of pre-veterinarian.

I am proud that we made it through the awful droughty summer of 2022. All the signs indicate this will be a good year ahead! I am proud of our cows as they have taken a beating the last couple years. It didn't green up last year, and the cows survived on dry old grass. Amazingly, we had the best AI percentage we have had since our late heat detecting days. These cows bred up 75% AI. How? We believe our long time selection for fertility, fleshing ability, and structure has made these cows adapt to the adverse conditions. I am proud of our bull offering. This is an excellent set of bulls to offer. A 3 lb ADG was easily attainable post weaning after a long summer of hot and dry conditions. Last, I am proud to be considered for your seed stock choice. We continue to take great pride in creating problem free cows. Utter, teat, foot, and leg structure are all top priorities for us. We take a balanced approach to our genetics. We like middle framed mature cow size that optimizes weaning weights based upon her size. We use phenotype just as much as EPDs when we are selecting our mating's. Our philosophy hasn't changed since we started 20 years ago.

I would like to thank Kate Loose for the outstanding pictures and videos; Rod and Cooper Spicher for the delightful brisket. Dr. Casey Solomon, Meghan Holt and Royce Houtzel for helping our AI reach its greatest potential. Thank you Josh Stroh of Hubbard Feeds for keeping our feed bin full, and for all of the excellent nutrition advice. B Diamond Cattle Services did a great job of trimming the bulls. Thank you Devin Murnin, Kurt Kangas, John Goggins, Gary Buffington, and Kyle Shobe for your expert auction support.

David and Katie Sattoriva

Fertility Information

View at WhistlingWindsAngus.com or call David directly.

Bull Videos

View all sale bull videos at FrontierLiveSale.com or WhistlingWindsAngus.com



David Sattoriva

406-390-1471 cell

406-397-3386 home

www.WhistlingWindsAngus.com



Whistling Winds Angus

Sight Unseen Purchase Guarantee - Buyers unable to attend the sale may call any time. Let us know your bull needs and your budget range. We'll bid on and purchase the best cattle possible for your specifications. We'll let you know of cattle purchased following the sale and make payment arrangements with you. If you aren't satisfied upon delivery, you don't own the bull(s).

Health & Performance - All bulls sell with complete breeding soundness exam, including scrotal measurements, palpation and semen evaluation by Dr. Casey Solomon, Milk River Reproduction. All bulls have been tested negative for BVD. They have received Fusogard, BoviShield Gold FP5 VL5 and pour on. The herd is part of an on-going Johne's screening program, and all bulls come from Johne's negative dams.

Bull Development - The bulls were developed on a high roughage ration at a 3 pound ADG to insure soundness.

Genomic Enhanced EPDs - All of the bulls in the sale offering have had HD50K DNA testing to increase EPD accuracies and predictability. The test is a tool to enhance selection and predict genetic potential. EPDs are current as of 2/23/23. Updated EPDs at www.Angus.org

Retained Interest - Whistling Winds Angus is retaining a 1/3 revenue share interest on all bulls selling in the sale, unless otherwise announced from the block. Natural use and salvage belongs to the buyer. If we choose to collect semen from a bull that you have purchased, we will have it done at your convenience and at our expense.

First Year Breeding Guarantee - (breeding season is defined as the 90 day period following the first turnout of the bulls). Please notify the breeder should an injury occur and prior to the injured bull being sold for salvage. All injured bulls must be diagnosed by a veterinarian. All bulls will be given 50% of the value of the injured bull, minus any salvage value, toward a credit or replacement bull if one is available.

Terms & Conditions - All cattle sell according to the standard terms and conditions of the American Angus Association.

Delivery/Hauling Rebate - Free delivery on the bulls within Montana. If you bring your trailer to the sale, a \$40 rebate will be returned to you after sale settlement for bulls you haul home on sale day.

Liability - All persons attending this sale do so at their own risk, legal or otherwise for their safety or the behavior of the animals. The owners, auction service and sale staff assume no liability for property loss or any accidents that may occur.

Announcements - Announcements from the block will take precedence over the catalog.

Accommodations -

Best Western Great Northern Inn	406-265-4200
Best Western Plus Havre Inn & Suites	406-265-2888
Super 8, Havre	406-265-1411
Americinn, Havre	406-395-5000

Annual Production Sale | Monday 1:00
March 20
 at the Ranch 2023
 14504 Road 6 North
 Hingham, Montana

Offering **50 BULLS** Including 30 Heifer Bulls

Sale Day Phone - 406-390-1471

Sale Location - At the Ranch, 14504 Road 6 North • Hingham, MT 59528
 See map inside back cover.

Auctioneer - Kyle Shobe406-366-0472

Representatives -
 Kurt Kangas, *American Angus Assoc.* 406-366-4190
 Gary Buffington, *Northern Livestock Video Auction* 406-390-9939
 Devin Murnin, *Western Livestock Journal* 406 696 1502
 John Goggins, *Western Ag Reporter*..... 406-698-4159

Lunch - Complimentary beef lunch served at 11:30 am. Please join us for lunch and look over the bulls on sale morning.

Inspection of Cattle - All cattle will be available for inspection at the ranch in Hingham, MT.

FRONTIER LIVE SALE

This Sale will be broadcast live on www.frontierlivesale.com. To view a sale,

1. Create an account, if you have already done so skip to next step. To create a new account, click on the word **Registration** in the upper right hand corner. You must fill out the information requested. Then click **Create Account**. An email will be sent to your email account you provided. Please click the link in the email to activate your new account.
2. Once you click the link, your account will now be activated
3. At this point, you may click **Continue To Browse Our Site**. This will allow you to view all upcoming auctions.
4. Once you see the auction you are interested in, click **Get Approved To Bid** for absentee and live bidding.
5. Please enter your information in the form. Depending on the auctioneer, different information may be requested. Click **I agree to sale terms and conditions**. Congratulations! You are now approved for the auction. Now that you're approved you can participate in the auction and bid on its items.
6. Login on sale day with the credentials provided at registration.



Call 866-313-0123 for tech help.



WW Hi Line 9290



Reference Sire Bull Born: 02/09/19 Reg Number: 19536570 Tattoo: 9290

COLEMAN CHARLO 0256 #
S A V RAINFALL 6846
 S A V BLACKCAP MAY 4136

O C C PAXTON 730P #
 BOHI ABIGALE 6014
 S A V 8180 TRAVELER 004 #
 S A V MAY 2397 #

CAR EFFICIENT 534 #
WW BEAUTY 2290 #
 WW BEAUTY 0290

K C F BENNETT EFFICIENT
 CAR MISS SUSIE 308 #
 S A V FINAL ANSWER 0035 #
 WW BEAUTY 6290

CED	BW	WW	YW	MILK	SEN
+6	+1.0	+68	+124	+27	-16
Marb EPD	REA EPD	Fat EPD	\$ M	\$W	\$B
+.60	+.44	+.030	+88	+67	+130

He is moderate framed with a ton of capacity. His dam is a super deep broody made pathfinder Efficient daughter made with perfect feet. His daughters look to be real good cows.

TEF Validate 042



Reference Sire Bull Born: 02/12/20 Reg Number: 19793268 Tattoo: 042

CONNEALY JUDGMENT
KG JUSTIFIED 3023#
 KG MISS MAGIC 1443

CONNEALY CONSENSUS 7229 #
 ENTRINE OF CONANGA 9876 #
 SITZ WISDOM 481T #
 KG MISS MAGIC 3528

CONNEALY CONFIDENCE 0100 #
TEF CHRISTINA 310
 T E F CHRISTINA 806

CONNEALY TOBIN
 BECKA GALA OF CONANGA 8281
 S S OBJECTIVE T510 0T26 #
 T E F CHRISTINA 251#

CED	BW	WW	YW	MILK	SEN
+11	-1.1	+72	+118	+29	-13
Marb EPD	REA EPD	Fat EPD	\$ M	\$W	\$B
+.92	+.53	+.054	+86	+81	+145

We purchased from Foran Angus. We admired his 8 year old dam for her moderate mature size and overall structure. Justified daughters are leaving an impact in the breed. Validate compliments Justified with moderate framed sound structured cattle with good growth while maintaining a moderate mature size.

Deer Valley Growth Fund



Reference Sire Bull Born: 01/22/17 Reg Number: 18827828 Tattoo: 71122

BASIN PAYWEIGHT 006S #
BASIN PAYWEIGHT 1682 #
 21AR O LASS 7017

VERMILION PAYWEIGHT J847 #
 BASIN LUCY 3829
 HARB PENDLETON 765 J H #
 21AR O LASS F24A

PLATTEMERE WEIGH UP K360 #
DEER VALLEY RITA 36113
 DEER VALLEY RITA 9457

SITZ UPWARD 307R #
 BARBARA OF PLATTEMERE 337 #
 G A R NEW DESIGN 5050 #
 G A R EXT 614

CED	BW	WW	YW	MILK	SEN
+10	+1.4	+90	+169	+34	-45
Marb EPD	REA EPD	Fat EPD	\$ M	\$W	\$B
+.31	+.68	+.055	+70	+94	+163

He is moderate framed with a ton of capacity. His dam is a super deep broody made pathfinder Efficient daughter made with perfect feet. His daughters look to be real good cows.

Basin Rainmaker 4404



Reference Sire Bull Born: 03/19/14 Reg Number: 17913751 Tattoo: 4404

BASIN RAINMAKER P175 #
BASIN RAINMAKER 2704
 BASIN ERICA 7520 BV #

BASIN RAINMAKER 747L #
 BASIN BLACKCAP LADY 693L
 BASIN FRANCHISE P142 #
 BASIN ERICA 8R02 BV

BASIN PAYWEIGHT 107S #
BASIN JOY 1036
 BASIN JOY 566T

VERMILION PAYWEIGHT J847 #
 BASIN LUCY 3829
 B P F SPECIAL FOCUS 504 #
 BASIN JOY 204R

CED	BW	WW	YW	MILK	SEN
+6	+1.3	+59	+108	+37	-23
Marb EPD	REA EPD	Fat EPD	\$ M	\$W	\$B
+.51	+.50	+.025	+72	+69	+148

He is an extremely balanced bull that ranks in the top for CED, BW, WW, YW, MARB and REA. Moderate framed and deep bodied with exceptional rib shape, sufficient muscle and is very correct in his structure, free moving and athletic. An outcross pedigree with calving ease creating mating flexibility in any program.

Square B True North 8052



Reference Sire **Square B True North 8052**
Bull Born: 08/16/18 Reg Number: 19405246 Tattoo: 8052

COLEMAN CHARLO 0256 #
S A V RAINFALL 6846
S A V BLACKCAP MAY 4136

O C C PAXTON 730P #
BOHI ABIGALE 6014
S A V 8180 TRAVELER 004 #
S A V MAY 2397 #

CONNELY CONSENSUS #
ELBANNA OF CONANGA 1209
ELBASTA OF CONANGA 9703

KMK ALLIANCE 6595 187#
BLINDA OF CONANGA 004
CONNELY FORWARD #
ELBA OF CONANGA 3761#

CED	BW	WW	YW	MILK	SEN
+16	-2.0	+54	+107	+33	+0
Marb EPD	REA EPD	Fat EPD	\$ M	\$ W	\$ B
+.98	+.59	+.047	+79	+64	+131

Phenotype standout with an unbeatable maternal data profile. Wide based and stout made bull with excellent muscle shape and substance. His daughters look to be the real deal with moderate, slick haired and easy fleshing with an outstanding maternal design.

Ellingson Rangeland



Reference Sire **Ellingson Rangeland**
Bull Born: 02/24/19 Reg Number: 19590500 Tattoo: 9144

BASIN RAINMAKER 2704
BASIN RAINMAKER 4404
BASIN JOY 1036

BASIN RAINMAKER P175 #
BASIN ERICA 7520 BV #
BASIN PAYWEIGHT 1075 #
BASIN JOY 566T

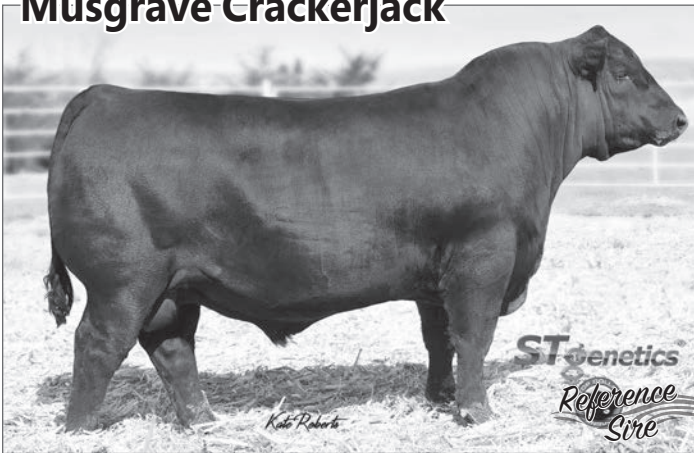
CTS REMEDY 1T01 #
EA EMBLYNETTE 7009
EA EMBLYNETTE 5241

CONNELY THUNDER #
CTS 7V03 BELLEMER MAID 9T02
KOUPAL ADVANCE 28 #
EA EMBLYNETTE 3249

CED	BW	WW	YW	MILK	SEN
+8	+.1	+69	+124	+34	-33
Marb EPD	REA EPD	Fat EPD	\$ M	\$ W	\$ B
+.51	+.80	+.019	+80	+71	+161

Calf crops are exceeding expectations. An outcross to virtually all sires that also excels for performance, capacity, and foot quality.

Musgrave Crackerjack



Reference Sire **Musgrave Crackerjack**
Bull Born: 01/08/18 Reg Number: 19202253 Tattoo: A811

LD CAPITALIST 316
MUSGRAVE 316 STUNNER
MCATL BLACKBIRD 831-1378 #

CONNELY CAPITALIST 028 #
LD DIXIE ERICA 2053
MCATL PURE PRODUCT 903-55 #
MCATL BLACKBIRD 1378-573

MUSGRAVE BIG SKY #
MUSGRAVE RITO JET A649
G C F MISS NEW LEVEL R216

CONNELY EARNAN 076E #
SAV PRIMROSE 7861
IRONWOOD NEW LEVEL #
RR RITO JET 7171 #

CED	BW	WW	YW	MILK	SEN
+11	-.9	+64	+116	+32	-32
Marb EPD	REA EPD	Fat EPD	\$ M	\$ W	\$ B
+.70	+.79	-.013	+35	+67	+156

He has proven his utility in many environments a go-to heifer bull that creates tremendous replacements. He is known for calf vigor at birth and a jet-black coat color with outstanding Angus character. Daughters we have calved so far look to be the type and kind we are striving to produce.

Mohnen Prince 2959



Reference Sire **Mohnen Prince 2959**
Bull Born: 01/15/19 Reg Number: 19567291 Tattoo: 2959

CONNELY CONFIDENCE 0100 #
CONNELY CONFIDENCE PLUS #
ELBANNA OF CONANGA 1209

CONNELY TOBIN
BECKA GALA OF CONANGA 8281
CONNELY CONSENSUS #
ELBASTA OF CONANGA 9703

S A V PIONEER 7301 #
MOHNEN ABIGALE 1170
MOHNEN ABIGALE 2006

S A V FINAL ANSWER 0035 #
S A V BLACKBIRD 5297
SITZ TRAVELER 8180 #
S A V ABIGALE 6062

CED	BW	WW	YW	MILK	SEN
+7	+1.5	+65	+122	+33	-13
Marb EPD	REA EPD	Fat EPD	\$ M	\$ W	\$ B
+.65	+.59	+.026	+89	+69	+134

Flawless in his design and make up. He has a big square hip and stands on an excellent set of feet and legs and strides out. Dam is a proven producer. Prince has balanced EPDs with great feet. I took a trip to Mohnens to look at the Prince sons. They were the most impressive sire group in the pen. You will see quite a few more Prince sons in our line up next year.

Musgrave 316 Stunner



Reference Sire **Musgrave 316 Stunner**

Bull Born: 02/19/16 Reg Number: 18467508 Tattoo: 1676

CONNEALY CAPITALIST 028 #
LD CAPITALIST 316 #
 LD DIXIE ERICA 2053

MCATL PURE PRODUCT 903-55 #
MCATL BLACKBIRD 831-1378
 MCATL BLACKBIRD 1378-573

S A V FINAL ANSWER 0035 #
 PRIDES PITA OF CONANGA 8821
 C A FUTURE DIRECTION 5321 #
 LD DIXIE ERICA OAR 0853

CONNEALY FINAL PRODUCT #
 M A ESTA 55-252
 CONNEALY REFLECTION #
 MA BLACKBIRD 573

CED	BW	WW	YW	MILK	SEN
+6	+2	+69	+116	+35	-26
Marb EPD	REA EPD	Fat EPD	\$ M	\$W	\$B
+0.94	+0.58	+0.091	+49	+81	+165

Stunner is admired for his width, dimension, and structural correctness. Very stylish. He maintains a well balanced package. Excellent set of EPDs that rank him at the top of the breed for CED, WW, CEM, and \$W.

A A R Outside 9052



Reference Sire **A A R Outside 9052**

Bull Born: 02/05/19 Reg Number: 19555023 Tattoo: 9052

HA OUTSIDE 3008
TEF OUTSIDE 514
 T E F JET PRINCESS 714 #

SITZ DASH 10277 #
A A R ELITE LADY 1005
 A A R ELITE LADY 9001 #

KG SOLUTION 0018 #
 HA EVER LADY 1575 #
 HILLTOP ALLIANCE T246
 T E F JET PRINCESS 405

SITZ UPWARD 307R #
 SITZ EVERELDA ENTENSE 2665
 TC RITO 416 #
 A A R ELITE LADY 7012

CED	BW	WW	YW	MILK	SEN
+9	+0.9	+70	+128	+30	-31
Marb EPD	REA EPD	Fat EPD	\$ M	\$W	\$B
+0.43	+0.70	+0.015	+82	+69	+136

He was our pick of the Arntzen Angus sale in 2020. We selected him for his overall structure, perfect feet, and added bone from a proven cow.

Big Dry Prototype G31



Reference Sire **Big Dry Prototype G31**

Bull Born: 03/28/19 Reg Number: 19689920 Freeze Brand: G31

CONNEALY CONFIDENCE PLUS #
WOODHILL BLUEPRINT
 WOODHILL EVERGREEN Z291-B233

CONNEALY CAPITALIST 028 #
BDAR QUEEN MOTHER 326A
 BDAR QUEEN MOTHER 738T

CONNEALY CONFIDENCE 0100 #
 ELBANNA OF CONANGA 1209
 TEHAMA SIERRA CUT Z118
 WOODHILL EVERGREEN U6-Z291

S A V FINAL ANSWER 0035 #
 PRIDES PITA OF CONANGA 8821
 B D A R BOOMERANG P035
 B D A R 986 LASS 3245

CED	BW	WW	YW	MILK	SEN
+11	+0.6	+72	+130	+40	-38
Marb EPD	REA EPD	Fat EPD	\$ M	\$W	\$B
+0.55	+0.61	+0.024	+63	+79	+141

Prototype was a bull we purchased from Big Dry Angus. He got hurt his 2nd year out so we didn't get a lot of calves out of him. I know Brent McRae thinks a lot of his Capitalist dam.

GDAR All Pro 9203

Reference Sire **GDAR All Pro 9203**

Bull Born: 02/14/19 Reg Number: 19464172 Freeze Brand: 9203

SANDPOINT BUTKUS X797 #
GDAR ALL PRO 519 #
 GDAR RACHEL 3203

GDAR GAME DAY 449 #
GDAR PAMELA EVER 812 #
 GDAR PAMELA EVER 664

S A V FINAL ANSWER 0035 #
 G A R GRID MAKER 4603
 SITZ WISDOM 481T #
 GDAR RACHEL 9100

BOYD NEW DAY 8005 #
 G D A R MISS WIX 474 #
 ER JUSTICE N013 #
 GDAR PAMELA EVER 3458

CED	BW	WW	YW	MILK	SEN
+12	-0.1	+65	+117	+25	-14
Marb EPD	REA EPD	Fat EPD	\$ M	\$W	\$B
+0.89	+0.32	+0.073	+73	+65	+149





lot **1** **WW Growth Fund 2390**

Bull Born: 02/04/22 Reg Number: 20521641 Tattoo: 2390

BASIN PAYWEIGHT 1682#
DEER VALLEY GROWTH FUND
 DEER VALLEY RITA 36113

S A V FINAL ANSWER 0035 #
WW BEAUTY 0290
 WW BEAUTY 6290

BASIN PAYWEIGHT 006S #
 21AR O LASS 7017
 PLATTEMERE WEIGH UP K360 #
 DEER VALLEY RITA 9457
 SITZ TRAVELER 8180 #
 S A V EMULOUS 8145
 O C C GREAT PLAINS 943G #
 STEVENSON BEAUTY 0102

Birth Wt	205 Wt	WW Ratio	365 Wt	YW Ratio	Adj Scrotal	Dam Production	
84	790	110	1363	115	40.26	11	WR 98
CEM EPD	BW EPD	WW EPD	YW EPD	MILK EPD	HP EPD	\$EN	
+10	+0.2	+87	+157	+23	+15.7	-32	
SC EPD	Marb EPD	REA EPD	\$ M	\$W	\$B		
+.80	+.35	+.69	+81	+79	+151		

- A great bull to start the sale with. Herd bull potential.
- He is the last and best calf that Dam 0290 produced.
 10 of the 11 calves she raised were AI calves.
- Longevity, maternal, and calving ease are built into this pedigree.
- Heifer bull ranks top 2% YW, top 3% WW, top 4% CEM, top 5% \$W, 10% HP, RADG, \$M, and \$F, top 20% \$C.



Whistling Winds Angus

www.WhistlingWindsAngus.com





lot **2** **WW Growth Fund 2160**

Bull Born: 02/08/22 Reg Number: 20493360 Tattoo: 2160

BASIN PAYWEIGHT 1682#
DEER VALLEY GROWTH FUND
 DEER VALLEY RITA 36113

BASIN PAYWEIGHT 006S #
 21AR O LASS 7017
 PLATTEMERE WEIGH UP K360 #
 DEER VALLEY RITA 9457
 A A R TEN X 7008 S A #
 WOODLAND BURGESS PRIDE 113 #
 CAR EFFICIENT 534 #
 WW PRINCESS 6097 #

A A R TEN X 3001 #
WW PRINCESS 5160
 WW PRINCESS 1609

Birth Wt	205 Wt	WW Ratio	365 Wt	YW Ratio	Adj Scrotal	Dam Production
78	741	103	1074	91	35.97	6 WR 103
CED EPD	BW EPD	WW EPD	YW EPD	MILK EPD	HP EPD	\$EN
+8	-0.3	+68	+122	+38	+16.0	-18
SC EPD	Marb EPD	REA EPD	\$M	\$W	\$B	
+0.35	+0.69	+0.30	+92	+80	+121	

- Another one of the very good bulls of this sale, herd bull potential.
- We decided to flush his Dam this year. She is a model cow for us and boasts a BR of 6@91, WR 6@103, YR 5@102. She has a mid frame size, excellent feet, leg, utter and teat structure. She has produced multiple herd sires including a son working at GDAR.
- This bull ranks in top 2% \$M, 5% \$W, and top 10% HP. Heifer bull.



WW Princess 5160 Dam to Lot 2





lot 3 WW Growth Fund 2035

Bull Born: 02/04/22 Reg Number: 20518872 Tattoo: 2035

BASIN PAYWEIGHT 1682#
DEER VALLEY GROWTH FUND
 DEER VALLEY RITA 36113

BASIN PAYWEIGHT 006S #
 21AR O LASS 7017
 PLATTEMERE WEIGH UP K360 #
 DEER VALLEY RITA 9457

SOO LINE MOTIVE 9016 #
WW BLACKCAP KAY E 8035
 WW BLACKCAP KAY 0500 #

HF KODIAK 5R
 TLA BEAUTY 5R
 S A V FINAL ANSWER 0035 #
 WW BLACKCAP KAY 8500

Birth Wt	205 Wt	WW Ratio	365 Wt	YW Ratio	Adj Scrotal	Dam Production
92	781	109	1269	107	35.53	3 WR 102
CED EPD	BW EPD	WW EPD	YW EPD	MILK EPD	HP EPD	\$EN
+5	+3.0	+82	+148	+35	+12.6	-41
SC EPD	Marb EPD	REA EPD	\$ M	\$W	\$B	
+.51	+.79	+.55	+69	+78	+150	

- This bull is easy to find in the pen. Herd bull potential.
- Moderate, thick and a clean made Growth Fund son.
- Dam is doing a great job with WR 3@102, YR 3@103. She was the first cow to calve this year.
- Granddam was a Pathfinder donor for us.
- This bull is in the top 10% WW and \$W, top 5% YW.



WW Blackcap Kay E 8035 Dam to Lot 3





lot 4 WW Growth Fund 2970

Bull Born: 02/04/22 Reg Number: 20493287 Tattoo: 2970

BASIN PAYWEIGHT 1682 #
DEER VALLEY GROWTH FUND
 DEER VALLEY RITA 36113

S A V RAINFALL 6846
WW PRINCESS 9970
 WW PRINCESS 9709

BASIN PAYWEIGHT 006S #
 21AR O LASS 7017
 PLATTEMERE WEIGH UP K360 #
 DEER VALLEY RITA 9457
 COLEMAN CHARLO 0256 #
 S A V BLACKCAP MAY 4136
 O C C MAGNITUDE 805M #
 WW PRINCESS 7097 #

Birth Wt	205 Wt	WW Ratio	365 Wt	YW Ratio	Adj Scrotal	Dam Production
91	801	113	1337	111	37.36	2 WR 107
CED EPD	BW EPD	WW EPD	YW EPD	MILK EPD	HP EPD	\$EN
+4	+1.6	+81	+150	+28	+11.4	-25
SC EPD	Marb EPD	REA EPD	\$ M	\$W	\$B	
+0.83	+0.36	+0.68	+84	+78	+144	

- Moderate soggy made with added bone.
- Stands on really good feet.
- Another standout that will add pay weight without the extra frame.
- Dam is rockn' solid with WR 2@107 and YR 2@106. She calved AI again this year.
- A solid cow family which goes back to the Dam of ABS promoted bull WW Definitive 9097.



lot 5 WW Rainmaker 2822

Bull Born: 02/04/22 Reg Number: 20493194 Tattoo: 2822

BASIN RAINMAKER 2704
BASIN RAINMAKER 4404
 BASIN JOY 1036

ELLINGSON CHAPS 4095 #
WW RALLY 8822
 WW RALLY 1822 #

BASIN RAINMAKER P175 #
 BASIN ERICA 7520 BV #
 BASIN PAYWEIGHT 107S #
 BASIN JOY 566T

S A V RESOURCE 1441 #
 E A BLACKCAP 0360 #
 SITZ DASH 10277 #
 BOYUM 9700 LADY RALLY IM0415

Birth Wt	205 Wt	WW Ratio	365 Wt	YW Ratio	Adj Scrotal	Dam Production
86	734	103	1216	103	38.03	3 WR 102
CED EPD	BW EPD	WW EPD	YW EPD	MILK EPD	HP EPD	\$EN
+9	+1.4	+78	+131	+33	+16.9	-28
SC EPD	Marb EPD	REA EPD	\$ M	\$W	\$B	
+1.71	+0.48	+0.44	+93	+82	+106	

- Out of a hard working Chaps daughter. Calved AI again this year.
- Grandam is a Pathfinder donor who is the dam of Lot 8.
- Should work on most heifers.





lot **6** **WW Crackerjack 2327**

Bull Born: 01/31/22 Reg Number: 20494458 Tattoo: 2327

MUSGRAVE 316 STUNNER
MUSGRAVE CRACKERJACK
 MUSGRAVE RITO JET A649

LD CAPITALIST 316 #
 MCATL BLACKBIRD 831-1378 #
 MUSGRAVE BIG SKY #
 G C F MISS NEW LEVEL R216
 COLEMAN CHARLO 0256 #
 S A V BLACKCAP MAY 4136
 WMR INFINITY 141 #
 OX BOW MANOR 2327 #

S A V RAINFALL 6846

WW MANOR 0327
 WW MANOR 5327 #

Birth Wt	205 Wt	WW Ratio	365 Wt	YW Ratio	Adj Scrotal	Dam Production	
68	759	100	1324	100	37.74	1 WR	100
CED EPD	BW EPD	WW EPD	YW EPD	MILK EPD	HP EPD	\$EN	
+11	-1.1	+82	+136	+25	+12.0	-18	
SC EPD	Marb EPD	REA EPD	\$ M	\$W	\$B		
+2.30	+.64	+.50	+77	+85	+124		

- Excellent EPD profile with herd bull potential.
- Moderate framed with excellent overall structure.
- Granddam and greatgrandam were both pathfinders.
- There is a good story to go with this bull. We took some pairs North to summer pasture bordering the Milk River. This calf and Dam disappeared. After months of searching and neighbors also searching, we gave up. November: Chan Miller calls with great news that cow and calf were in Billy's pasture. This calf was outstanding, weighing 818 lbs. Unfortunately, he only shows a 100 ratio due to being forced by the circumstances into a single animal contemporary group.
- He is one of my favorites.
- Thanks to great neighbors for returning him to us!
- Heifer bull.





lot 7 WW Crackerjack 2816

Bull Born: 01/31/22 Reg Number: 20494448 Tattoo: 2816

MUSGRAVE 316 STUNNER
MUSGRAVE CRACKERJACK
 MUSGRAVE RITO JET A649

LD CAPITALIST 316 #
 MCATL BLACKBIRD 831-1378 #
 MUSGRAVE BIG SKY #
 G C F MISS NEW LEVEL R216

A A R CREED 7808
WW CHARLEE 0816
 WW CHARLEE 8166

A A R CREED 5802
 A A R ANKONIAN 5842
 A A R TEN X 3001 #
 WW CHARLEE 0166

Birth Wt	205 Wt	WW Ratio	365 Wt	YW Ratio	Adj. Scrotal	Dam Production
80	784	110	1322	109	38.24	1 WR 110
CED EPD	BW EPD	WW EPD	YW EPD	MILK EPD	HP EPD	\$EN
+10	-0.8	+75	+135	+35	+11.0	-35
SC EPD	Marb EPD	REA EPD	\$ M	\$ W	\$ B	
+1.23	+0.82	+0.44	+54	+80	+149	

- Another really good Crackerjack bull out of a heifer.
- EPD profile ranks top 4%\$W, top 15% BW,WW,YW.
- Deep bodied good uttered dam calved AI again this year.



lot 8 WW Stunner E 2966

Bull Born: 02/13/22 Reg Number: +20521357 Tattoo: 2966

LD CAPITALIST 316#
MUSGRAVE 316 STUNNER
 MCATL BLACKBIRD 831-1378 #

CONNEALY CAPITALIST 028 #
 LD DIXIE ERICA 2053
 MCATL PURE PRODUCT 903-55 #
 MCATL BLACKBIRD 1378-573

SITZ DASH 10277 #
WW RALLY 1822 #
 BOYUM 9700 LADY RALLY IM0415

SITZ UPWARD 307R #
 SITZ EVERELDA ENTENSE 2665
 H A IMAGE MAKER 0415 #
 D C M RALLY MGR 420

Birth Wt	205 Wt	WW Ratio	365 Wt	YW Ratio	Adj. Scrotal	Dam Production
86	715	100	1161	100	35.13	10 WR 100
CED EPD	BW EPD	WW EPD	YW EPD	MILK EPD	HP EPD	\$EN
+8	+0.1	+66	+108	+31	+13.9	-15
SC EPD	Marb EPD	REA EPD	\$ M	\$ W	\$ B	
+1.04	+0.25	+0.62	+74	+74	+118	

- The only Stunner in the sale. He is a good one.
- Dam is a hard working, great producing 12 year old donor cow. She has perfect feet and has added length with calving ease.
- He will be moderate framed, a good traveler and an excellent heifer bull that will leave some excellent replacements.
- Dam calved AI again this year.





lot 9 WW Growth Fund 2830
Bull Born: 02/12/22 Reg Number: 20493323 Tattoo: 2830

BASIN PAYWEIGHT 1682#
DEER VALLEY GROWTH FUND
 DEER VALLEY RITA 36113

GAFFNEY GAME TIME 370 #
O A DONNA 830 #
 O A DONNA 520

BASIN PAYWEIGHT 006S #
 21AR O LASS 7017
 PLATTEMERE WEIGH UP K360 #
 DEER VALLEY RITA 9457
 CONNEALY CONFIDENCE 0100 #
 R B LADY STANDARD 305-890
 SITZ O A UPWARD 396
 O A DONNA 220

Birth Wt	205 Wt	WW Ratio	365 Wt	YW Ratio	Adj. Scrotal	Dam Production
86	803	112	1363	115	36.28	2 WR 113
CED EPD	BW EPD	WW EPD	YW EPD	MILK EPD	HP EPD	\$EN
+7	+1.3	+75	+133	+37	+15.4	-22
SC EPD	Marb EPD	REA EPD	\$M	\$W	\$B	
+0.86	+0.46	+0.45	+0.87	+0.83	+125	

- His Pathfinder dam doesn't miss. She has a beautiful utter, good feet, and has extra length. She will make an easy choice for future Donor program.
- He boasts top 3% \$M and \$W, top 15% WW and YW.
- Good bull.



lot 10 WW Validate 2417
Bull Born: 02/20/22 Reg Number: 20491394 Tattoo: 2417

KG JUSTIFIED 3023#
TEF VALIDATE 042
 TEF CHRISTINA 310

ELLINGSON CHAPS 4095 #
WW CHERE 9417
 WW CHERE 6417

CONNEALY JUDGMENT
 KG MISS MAGIC 1443
 CONNEALY CONFIDENCE 0100 #
 T E F CHRISTINA 806
 S A V RESOURCE 1441 #
 E A BLACKCAP 0360 #
 SOO LINE MOTIVE 9016 #
 MA CHERE 3417

Birth Wt	205 Wt	WW Ratio	365 Wt	YW Ratio	Adj. Scrotal	Dam Production
80	834	117	1357	112	37.38	2 WR 110
CED EPD	BW EPD	WW EPD	YW EPD	MILK EPD	HP EPD	\$EN
+6	+1.3	+90	+139	+20	+10.2	-21
SC EPD	Marb EPD	REA EPD	\$M	\$W	\$B	
+1.09	+0.26	+0.72	+0.81	+0.85	+105	

- Carrying an excellent phenotype, he has the heaviest weaning weight in the sale.
- Dam is from a good cow family with excellent overall structure.
- Ranks in the top 2% WW and \$W, top 10% \$M and YW.
- Will work on larger framed heifers.





lot 11 **WW Rainmaker 2845**

Bull Born: 02/09/22 Reg Number: 20493197 Tattoo: 2845

BASIN RAINMAKER 2704
BASIN RAINMAKER 4404
 BASIN JOY 1036

BASIN RAINMAKER P175 #
 BASIN ERICA 7520 BV #
 BASIN PAYWEIGHT 1075 #
 BASIN JOY 566T

GAFFNEY GAME TIME 370 #
O A BARBARAMERE NELL #
 O A BARBARAMERE NELL 2045

CONNELY CONFIDENCE 0100 #
 R B LADY STANDARD 305-890
 ONEILLS LUCKY BOY
 SITZ BARBARAMERE NELL 700P

Birth Wt	205 Wt	WW Ratio	365 Wt	YW Ratio	Adj Scrotal	Dam Production
72	763	107	1241	105	34.69	3 WR 106
CED EPD	BW EPD	WW EPD	YW EPD	MILK EPD	HP EPD	\$EN
+13	-0.9	+62	+107	+27	+8.1	-30
SC EPD	Marb EPD	REA EPD	\$ M	\$W	\$B	
+.87	+.44	+1.09	+50	+61	+145	

- Biggest ribeye EPD in the offering.
- Pathfinder Dam.
- Heifer bull.



lot 12 **WW Validate 2315**

Bull Born: 02/09/22 Reg Number: 20491387 Tattoo: 2315

KG JUSTIFIED 3023#
TEF VALIDATE 042
 TEF CHRISTINA 310



TOP NOTCH TURBO 827
WW WYLEE WAFFLE 315H
 WYLEES WAFFLE

CONNELY JUDGMENT
 KG MISS MAGIC 1443
 CONNEALY CONFIDENCE 0100 #
 T E F CHRISTINA 806
 STEVENSON TURBO POWER 50010
 TOP NOTCH MISS DESIGN 534
 SRS MOTIVE 2246B
 WW QUEENETT 1454 #

Birth Wt	205 Wt	WW Ratio	365 Wt	YW Ratio	Adj Scrotal	Dam Production
78	789	111	1291	107	35.03	1 WR 111
CED EPD	BW EPD	WW EPD	YW EPD	MILK EPD	HP EPD	\$EN
+9	+0.3	+83	+137	+33	+15.7	-29
SC EPD	Marb EPD	REA EPD	\$ M	\$W	\$B	
+1.02	+1.00	+.45	+80	+89	+168	

- Sired by Validate who is passing along thick, moderate framed clean made sons.
- Top 1% \$W, top 5% WW, top 10% \$M.
- Heifer bull.





lot 13 WW Prince 2335
 Bull Born: 02/07/22 Reg Number: 20520847 Tattoo: 2335

CONNEALY CONFIDENCE PLUS#
MOHNEN PRINCE 2959
 MOHNEN ABIGALE 1170

SOO LINE MOTIVE 9016 #
WW BLACKCAP KAY 8335
 WW BLACKCAP KAY 5335 #

CONNEALY CONFIDENCE 0100 #
 ELBANNA OF CONANGA 1209
 S A V PIONEER 7301 #
 MOHNEN ABIGALE 2006

HF KODIAK 5R
 TLA BEAUTY 5R
 PA POWER TOOL 9108 #
 WW BLACKCAP KAY 3335

Birth Wt	205 Wt	WW Ratio	365 Wt	YW Ratio	Adj Scrotal	Dam Production
82	707	99	1096	93	36.12	3 WR 98
CED EPD	BW EPD	WW EPD	YW EPD	MILK EPD	HP EPD	\$EN
+7	+0.8	+54	+93	+34	+14.5	+0
SC EPD	Marb EPD	REA EPD	\$ M	\$W	\$B	
+1.7	+4.8	+85	+88	+66	+131	

- Dam is phenotypically one of my favorites. She is easy to find in the herd. Moderate framed with near perfect structure.
- Daughters will be excellent.
- Heifer bull.



lot 15 WW Growth Fund 2006
 Bull Born: 02/03/22 Reg Number: 20493373 Tattoo: 2006

BASIN PAYWEIGHT 1682#
DEER VALLEY GROWTH FUND
 DEER VALLEY RITA 36113

S A V FINAL ANSWER 0035 #
OX BOW BARBARAMERE JET 206 #
 OX BOW BARBARAMERE JET 081

BASIN PAYWEIGHT 006S #
 21AR O LASS 7017
 PLATTEMERE WEIGH UP K360 #
 DEER VALLEY RITA 9457

SITZ TRAVELER 8180 #
 S A V EMULOUS 8145
 REDLAND EMBLAZON 3234
 OX BOW BARBARAMERE JET 125

Birth Wt	205 Wt	WW Ratio	365 Wt	YW Ratio	Adj Scrotal	Dam Production
82	785	110	1278	108	34.91	6 WR 104
CED EPD	BW EPD	WW EPD	YW EPD	MILK EPD	HP EPD	\$EN
+5	+1.0	+94	+166	+32	+12.2	-54
SC EPD	Marb EPD	REA EPD	\$ M	\$W	\$B	
+1.75	+0.33	+0.74	+57	+89	+162	

- 11 year old Pathfinder Dam still going strong. Calved AI again this year.
- Twin ranks top 1% \$W, WW, and YW EPD.



lot 14 WW Hi Line 2790
 Bull Born: 02/06/22 Reg Number: 20491392 Tattoo: 2790

S A V RAINFALL 6846
WW HI LINE 9290
 WW BEAUTY 2290 #

SITZ RELOAD 411C #
GDAR BLACKCAP 779
 GDAR BLACKCAP 426

COLEMAN CHARLO 0256 #
 S A V BLACKCAP MAY 4136
 CAR EFFICIENT 534 #
 WW BEAUTY 0290

S A V RESOURCE 1441 #
 SITZ FOREVER LADY 612T #
 A A R LEUPOLD 0578 #
 GDAR BLACKCAP 2240 #

Birth Wt	205 Wt	WW Ratio	365 Wt	YW Ratio	Adj Scrotal	Dam Production
84	733	102	1162	98	39.43	4 WR 97
CED EPD	BW EPD	WW EPD	YW EPD	MILK EPD	HP EPD	\$EN
+11	-1.0	+54	+97	+30	+18.1	-10
SC EPD	Marb EPD	REA EPD	\$ M	\$W	\$B	
+1.51	+0.53	+0.17	+91	+61	+96	

- Sire Hi Line has daughters calving as we speak. They are showing to be good overall structure, gentle yet with good mothering abilities.
- Heifer bull.



lot 16 WW Validate 2005
 Bull Born: 02/06/22 Reg Number: 20491396 Tattoo: 2005

KG JUSTIFIED 3023#
TEF VALIDATE 042
 TEF CHRISTINA 310

BASIN PAYWEIGHT PLUS 6048
WW BLACKCAP KAY 0609
 WW BLACKCAP KAY E 8609

CONNEALY JUDGMENT
 KG MISS MAGIC 1443
 CONNEALY CONFIDENCE 0100 #
 T E F CHRISTINA 806

BASIN PAYWEIGHT 1682 #
 EXAR ROYAL LASS 2810
 SOO LINE MOTIVE 9016 #
 WW BLACKCAP KAY 0500 #

Birth Wt	205 Wt	WW Ratio	365 Wt	YW Ratio	Adj Scrotal	Dam Production
70	751	105	1193	98	38.93	1 WR 105
CED EPD	BW EPD	WW EPD	YW EPD	MILK EPD	HP EPD	\$EN
+9	-1.1	+58	+89	+39	+14.2	+4
SC EPD	Marb EPD	REA EPD	\$ M	\$W	\$B	
+2.05	+1.13	+0.45	+100	+81	+119	

- A long and profitable cow family. Granddam goes back to the great donor 0500.
- Heifer bull.



lot 17

WW Validate 2449

Bull Born: 01/31/22 Reg Number: 20491397 Tattoo: 2449

KG JUSTIFIED 3023#
TEF VALIDATE 042
 TEF CHRISTINA 310

CONNEALY JUDGMENT
 KG MISS MAGIC 1443
 CONNEALY CONFIDENCE 0100 #
 T E F CHRISTINA 806

ELLINGSON CHAPS 4095 #
WW BRANDI 0449
 WW BRANDI 4497

S A V RESOURCE 1441 #
 E A BLACKCAP 0360 #
 WW DEFINITIVE 9097
 WW BRANDI 2497

Birth Wt	205 Wt	WW Ratio	365 Wt	YW Ratio	Adj. Scrotal	Dam Production
62	746	105	1236	102	34.74	1 WR 105
CED EPD	BW EPD	WW EPD	YW EPD	MILK EPD	HP EPD	\$EN
+11	-1.5	+76	+119	+27	+13.7	-13
SC EPD	Marb EPD	REA EPD	\$M	\$W	\$B	
+0.93	+0.49	+0.62	+89	+84	+119	

- Moderate framed.
- Validate sons keep scoring well; Top 2% \$M and \$W.
- Heifer bull.

ANGUS
Powered by Regen Genetics

lot 18

WW Rangeland 2040

Bull Born: 02/06/22 Reg Number: 20494551 Tattoo: 2040

BASIN RAINMAKER 4404
ELLINGSON RANGELAND
 EA EMBLYNETTE 7009

BASIN RAINMAKER 2704
 BASIN JOY 1036
 CTS REMEDY 1T01 #
 EA EMBLYNETTE 5241

A A R TEN X 3001 #
WW FREEDOM PRIDE 5040 #
 WW FREEDOM PRIDE 1040

A A R TEN X 7008 S A #
 WOODLAND BURGESS PRIDE 113 #
 SITZ DASH 10277 #
 PGC MISS FREEDOM PRIDE 9040

Birth Wt	205 Wt	WW Ratio	365 Wt	YW Ratio	Adj. Scrotal	Dam Production
92	733	102	1179	99	35.90	6 WR 105
CED EPD	BW EPD	WW EPD	YW EPD	MILK EPD	HP EPD	\$EN
+9	+0.6	+70	+124	+37	+18.3	-21
SC EPD	Marb EPD	REA EPD	\$M	\$W	\$B	
+0.96	+0.48	+0.46	+95	+79	+125	

- Pathfinder Dam.
- Top 1% \$M, top 10% \$W.
- Should work on most heifers.

ANGUS
Powered by Regen Genetics





lot 19 WW Rangeland 2608

Bull Born: 02/04/22 Reg Number: 20494483 Tattoo: 2608

BASIN RAINMAKER 4404
ELLIGSON RANGELAND
 EA EMBLYNETTE 7009

S A V RAINFALL 6846
WW PRAIRIE GRASS 9608
 WW PRAIRIE GRASS 6608

BASIN RAINMAKER 2704
 BASIN JOY 1036
 CTS REMEDY 1T01 #
 EA EMBLYNETTE 5241
 COLEMAN CHARLO 0256 #
 S A V BLACKCAP MAY 4136
 SOO LINE MOTIVE 9016 #
 PGC NEW DESIGN 9008

Birth Wt	205 Wt	WW Ratio	365 Wt	YW Ratio	Adj Scrotal	Dam Production
84	758	106	1340	110	39.36	1 WR 106
CED EPD	BW EPD	WW EPD	YW EPD	MILK EPD	HP EPD	\$EN
+0	+2.7	+81	+146	+21	+15.3	-42
SC EPD	Marb EPD	REA EPD	\$ M	\$W	\$B	
+.78	+.67	+.43	+58	+62	+157	

- Rainmaker's daughters are definitely the reason to use Rainmaker. Excellent disposition, feet, legs, teats and utters.
- Combine Rainfall with Motive and you get really good cows.



lot 21 WW Hi Line 2435

Bull Born: 02/11/22 Reg Number: 20491377 Tattoo: 2435

S A V RAINFALL 6846
WW HI LINE 9290
 WW BEAUTY 2290 #

KMK ALLIANCE 6595 187 #
WW SECOND EDITION 1435 #
 BOYUM 8425 OF 1323 EM8023

COLEMAN CHARLO 0256 #
 S A V BLACKCAP MAY 4136
 CAR EFFICIENT 534 #
 WW BEAUTY 0290
 SITZ ALLIANCE 6595 #
 G A R EXT 916 #
 B C EMBLAZON 854E 8023
 BOYBOY 1323 OF 3452

Birth Wt	205 Wt	WW Ratio	365 Wt	YW Ratio	Adj Scrotal	Dam Production
80	759	106	1215	103	35.28	10 WR 110
CED EPD	BW EPD	WW EPD	YW EPD	MILK EPD	HP EPD	\$EN
+6	-0.2	+66	+117	+32	+17.3	-13
SC EPD	Marb EPD	REA EPD	\$ M	\$W	\$B	
+.88	+.42	+.40	+91	+74	+115	

- I can't say enough wonderful things about this Pathfinder Dam. She raised all bulls, calved AI 8 of 10 years, has extra bone and stands on excellent feet.
- Dam has raised multiple herd sires including last years Rainmaker son selling to Giem Angus.
- This will be her last son selling as we retire her.



lot 20 WW Hi Line 2672

Bull Born: 02/10/22 Reg Number: 20491379 Tattoo: 2672

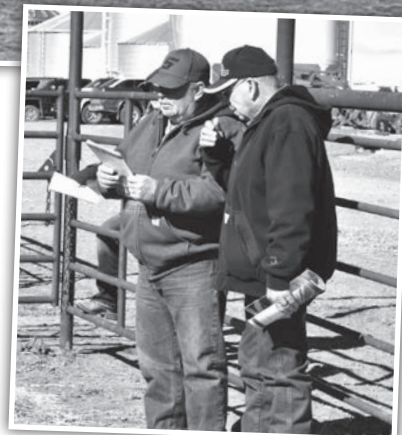
S A V RAINFALL 6846
WW HI LINE 9290
 WW BEAUTY 2290 #

SOO LINE MOTIVE 9016 #
WW BEAUTY 6729
 WW BEAUTY 0729

COLEMAN CHARLO 0256 #
 S A V BLACKCAP MAY 4136
 CAR EFFICIENT 534 #
 WW BEAUTY 0290
 HF KODIAK 5R
 TLA BEAUTY 5R
 B C EMBLAZON 854E 8023
 WW BEAUTY 7290

Birth Wt	205 Wt	WW Ratio	365 Wt	YW Ratio	Adj Scrotal	Dam Production
98	753	105	1199	101	35.03	5 WR 102
CED EPD	BW EPD	WW EPD	YW EPD	MILK EPD	HP EPD	\$EN
+3	+2.1	+72	+127	+29	+15.7	-24
SC EPD	Marb EPD	REA EPD	\$ M	\$W	\$B	
+.43	+.46	+.58	+78	+70	+133	

- This bull's Dam is a feminine beautiful uttered cow.
- From the good and steady Hi Line.





lot 22 WW Prince 2927
 Bull Born: 02/03/22 Reg Number: 20493198 Tattoo: 2927

CONNEALY CONFIDENCE PLUS #
MOHNEN PRINCE 2959
 MOHNEN ABIGALE 1170

STEVENSON TURBO POWER 50010
TOP NOTCH TURBO LADY 927
 TOP NOTCH FINAL ANSWER 17

CONNEALY CONFIDENCE 0100 #
 ELBANNA OF CONANGA 1209
 S A V PIONEER 7301 #
 MOHNEN ABIGALE 2006
 PA FULL POWER 1208 #
 STEVENSON AMBER ROSE 3262
 HOLMAN FINAL ANSWER 820
 TOP NOTCH MS IMAGE MAKER 95

Birth Wt	205 Wt	WW Ratio	365 Wt	YW Ratio	Adj Scrotal	Dam Production
90	750	105	1248	103	36.33	2 WR 104
CED EPD	BW EPD	WW EPD	YW EPD	MILK EPD	HP EPD	\$EN
+7	+1.0	+72	+125	+25	+14.1	-10
SC EPD	Marb EPD	REA EPD	\$ M	\$W	\$B	
+0.23	+0.62	+0.44	+82	+71	+123	

• Cow bull with added bone out of a broody made Turbo power cow. **ANGUSGS**
Powered by Nogen GenCo



lot 24 WW Rainmaker 2211
 Bull Born: 02/08/22 Reg Number: 20493185 Tattoo: 2211

BASIN RAINMAKER 2704
BASIN RAINMAKER 4404
 BASIN JOY 1036

SITZ RELOAD 411C #
GDAR JOAN 9311
 GDAR JOAN 5576

BASIN RAINMAKER P175 #
 BASIN ERICA 7520 BV #
 BASIN PAYWEIGHT 107S #
 BASIN JOY 566T

S A V RESOURCE 1441 #
 SITZ FOREVER LADY 612T #
 NF EVERREADY Z186
 GDAR JOAN 0504

Birth Wt	205 Wt	WW Ratio	365 Wt	YW Ratio	Adj Scrotal	Dam Production
78	713	100	1209	100	34.99	2 WR 98
CED EPD	BW EPD	WW EPD	YW EPD	MILK EPD	HP EPD	\$EN
+6	+0.5	+74	+128	+36	+17.4	-29
SC EPD	Marb EPD	REA EPD	\$ M	\$W	\$B	
+1.13	+0.71	+0.45	+87	+80	+154	

• Rainmaker's daughters are definitely the reason to use Rainmaker. **ANGUSGS**
Powered by Nogen GenCo
 Excellent disposition, feet, legs, teats and utters.
 • Top 4% \$M and \$W, his genomic ranks him in the top 1% HP.



lot 23 WW Prototype 2119
 Bull Born: 03/06/22 Reg Number: 20491380 Tattoo: 2119

WOODHILL BLUEPRINT
BIG DRY PROTOTYPE G31
 BDAR QUEEN MOTHER 326A

CONNEALY CONFIDENCE 0100 #
GMAR CONFIDENCE C119
 GMAR INDUSTRY X117

CONNEALY CONFIDENCE PLUS #
 WOODHILL EVERGREEN Z291-B233
 CONNEALY CAPITALIST 028 #
 BDAR QUEEN MOTHER 738T

CONNEALY TOBIN
 BECKA GALA OF CONANGA 8281
 CONNEALY INDUSTRY 5634 #
 GMAR RITO 6212 #

Birth Wt	205 Wt	WW Ratio	365 Wt	YW Ratio	Adj Scrotal	Dam Production
102	828	116	1343	114	37.80	6 WR 103
CED EPD	BW EPD	WW EPD	YW EPD	MILK EPD	HP EPD	\$EN
+6	+3.2	+69	+122	+34	+10.5	-31
SC EPD	Marb EPD	REA EPD	\$ M	\$W	\$B	
+0.36	+0.31	+0.70	+50	+66	+112	

• Good bull that has some length and power built into him.
 • Don't let his birth weight scare you; he comes from a productive Confidence daughter with average birth weight at 82 lbs on 6 calves. **ANGUSGS**
Powered by Nogen GenCo



lot 25 WW Prototype 2834
 Bull Born: 03/07/22 Reg Number: 20491381 Tattoo: 2834

WOODHILL BLUEPRINT
BIG DRY PROTOTYPE G31
 BDAR QUEEN MOTHER 326A

CONNEALY GUINNESS #
TOP NOTCH MISS CHINOOK 834
 TOP NOTCH MISS CHINOOK 437

CONNEALY CONFIDENCE PLUS #
 WOODHILL EVERGREEN Z291-B233
 CONNEALY CAPITALIST 028 #
 BDAR QUEEN MOTHER 738T

CONNEALY DUBLIN 8223 #
 PANDA OF CONANGA 3609
 CONNEALY BLACK GRANITE #
 TOP NOTCH MS CHINK 8107-10

Birth Wt	205 Wt	WW Ratio	365 Wt	YW Ratio	Adj Scrotal	Dam Production
98	774	108	1187	100	36.02	3 WR 104
CED EPD	BW EPD	WW EPD	YW EPD	MILK EPD	HP EPD	\$EN
+0	+1.9	+78	+129	+37	+16.3	-31
SC EPD	Marb EPD	REA EPD	\$ M	\$W	\$B	
+1.42	+0.64	+0.46	+86	+84	+142	

• Cow bull.
 • Top 2% \$W, 3% \$M, 10% WW.
 • Our Prototype daughters look like they will make great cows. **ANGUSGS**
Powered by Nogen GenCo



lot 26 **WW Hi Line 2258**
 Bull Born: 02/03/22 Reg Number: 20491393 Tattoo: 2258

S A V RAINFALL 6846
WW HI LINE 9290
 WW BEAUTY 2290 #
 SRS ENGAGE 4221E
SRS MANOR 9258G
 SRS MANOR 5203C

COLEMAN CHARLO 0256 #
 S A V BLACKCAP MAY 4136
 CAR EFFICIENT 534 #
 WW BEAUTY 0290
 SITZ BRIGADE 12074
 SRS MANOR 4221B
 CONNEALY CONSENSUS 7229 #
 OX BOW MANOR 443 #

Birth Wt	205 Wt	WW Ratio	365 Wt	YW Ratio	Adj Scrotal	Dam Production
72	747	105	1166	96	38.33	2 WR 102
CED EPD	BW EPD	WW EPD	YW EPD	MILK EPD	HP EPD	\$EN
+13	-0.6	+72	+129	+31	+13.2	-16
SC EPD	Marb EPD	REA EPD	\$ M	\$W	\$B	
+1.14	+0.46	+0.39	+89	+78	+135	

- Heifer bull.
- Our Hi Line daughters have excellent disposition. They are deep bodied and look to have good feet and utters.



lot 28 **WW Validate 2805**
 Bull Born: 02/23/22 Reg Number: 20509157 Tattoo: 2805

KG JUSTIFIED 3023#
TEF VALIDATE 042
 TEF CHRISTINA 310
 TEX PLAYBOOK 5437 #
PGC SHOESHONE CHISSY 9080
 PGC SHOESHONE CHISUM 3086

CONNEALY JUDGMENT
 KG MISS MAGIC 1443
 CONNEALY CONFIDENCE 0100 #
 T E F CHRISTINA 806
 BASIN PAYWEIGHT 1682 #
 RITA 1C43 OF 9M26 COMPLETE
 S CHISUM 6175 #
 PGC SHOESHONE 8010 #

Birth Wt	205 Wt	WW Ratio	365 Wt	YW Ratio	Adj Scrotal	Dam Production
66	739	104	1230	102	35.47	2 WR 97
CED EPD	BW EPD	WW EPD	YW EPD	MILK EPD	HP EPD	\$EN
+10	-0.4	+76	+126	+29	+17.2	-11
SC EPD	Marb EPD	REA EPD	\$ M	\$W	\$B	
+1.39	+0.75	+0.53	+95	+84	+148	

- Top 2% HP, 1% \$M, 3% \$W, 10% \$C, 15% WW.
- Heifer bull.



**Due to Management Error
 this Bull didn't get his
 picture taken.**

lot 27

lot 27 **WW Rainmaker 2208**
 Bull Born: 02/06/22 Reg Number: 20493184 Tattoo: 2208

BASIN RAINMAKER 2704
BASIN RAINMAKER 4404
 BASIN JOY 1036
 SRS CAPSTONE 0671C
SRS KATHY 9208G
 S R S KATHY 0103X #

BASIN RAINMAKER P175 #
 BASIN ERICA 7520 BV #
 BASIN PAYWEIGHT 1075 #
 BASIN JOY 566T
 CONNEALY BLACK GRANITE #
 H A R B ERICA ANNIE 710
 CONNEALY ONWARD #
 S R S KATHY 0394N #

Birth Wt	205 Wt	WW Ratio	365 Wt	YW Ratio	Adj Scrotal	Dam Production
78	758	106	1299	107	37.93	2 WR 100
CED EPD	BW EPD	WW EPD	YW EPD	MILK EPD	HP EPD	\$EN
+10	+1.2	+82	+146	+37	+14.3	-46
SC EPD	Marb EPD	REA EPD	\$ M	\$W	\$B	
+1.49	+0.49	+0.64	+69	+83	+162	

- Heifer bull.
- Added length, very gentle disposition.



lot 29 **WW True North 2212**
 Bull Born: 02/04/22 Reg Number: 20491389 Tattoo: 2212

S A V RAINFALL 6846
SQUARE B TRUE NORTH 8052
 ELBASTA OF CONANGA 1209
 BASIN PAYWEIGHT PLUS 6048
WW BEAUTY 9212
 WW BEAUTY 2129

COLEMAN CHARLO 0256 #
 S A V BLACKCAP MAY 4136
 CONNEALY CONSENSUS #
 ELBASTA OF CONANGA 9703
 BASIN PAYWEIGHT 1682 #
 EXAR ROYAL LASS 2810
 HARRISON BROADCAST 9101
 STEVENSON BEAUTY 0102

Birth Wt	205 Wt	WW Ratio	365 Wt	YW Ratio	Adj Scrotal	Dam Production
70	729	102	1183	97	36.36	2 WR 103
CED EPD	BW EPD	WW EPD	YW EPD	MILK EPD	HP EPD	\$EN
+14	-1.5	+59	+99	+33	+13.9	-16
SC EPD	Marb EPD	REA EPD	\$ M	\$W	\$B	
+2.60	+0.70	+0.51	+80	+69	+110	

- The True North sire is a surefire heifer bull. His progeny are smooth made with a very nice phenotype.
- Heifer bull.





lot 30 WW Validate 2016

Bull Born: 02/25/22 Reg Number: 20491388 Tattoo: 2016

KG JUSTIFIED 3023#
TEF VALIDATE 042
TEF CHRISTINA 310

S A V RAINFALL 6846
WW CHARLEE 0016
WW CHARLEE 0166

CONNEALY JUDGMENT
KG MISS MAGIC 1443
CONNEALY CONFIDENCE 0100 #
T E F CHRISTINA 806

COLEMAN CHARLO 0256 #
S A V BLACKCAP MAY 4136
S A V FINAL ANSWER 0035 #
A A R CHARLEE 3166

Birth Wt	205 Wt	WW Ratio	365 Wt	YW Ratio	Adj Scrotal	Dam Production
70	706	99	1181	97	37.04	1 WR 99
CED EPD	BW EPD	WW EPD	YW EPD	MILK EPD	HP EPD	\$EN
+13	-2.0	+58	+97	+36	+15.4	-7
SC EPD	Marb EPD	REA EPD	\$ M	\$W	\$B	
+0.92	+0.65	+0.58	+82	+74	+118	

- Moderate framed.
- Sleep all night heifer bull.



lot 32 WW Rainmaker 2609

Bull Born: 02/01/22 Reg Number: 20493193 Tattoo: 2609

BASIN RAINMAKER 2704
BASIN RAINMAKER 4404
BASIN JOY 1036

SOO LINE MOTIVE 9016 #
WW BLACKCAP KAY E 8609
WW BLACKCAP KAY 0500 #

BASIN RAINMAKER P175 #
BASIN ERICA 7520 BV #
BASIN PAYWEIGHT 107S #
BASIN JOY 566T

HF KODIAK 5R
TLA BEAUTY 5R
S A V FINAL ANSWER 0035 #
WW BLACKCAP KAY 8500

Birth Wt	205 Wt	WW Ratio	365 Wt	YW Ratio	Adj Scrotal	Dam Production
78	717	100	1187	100	37.93	3 WR 104
CED EPD	BW EPD	WW EPD	YW EPD	MILK EPD	HP EPD	\$EN
+11	-0.2	+66	+119	+31	+14.5	-21
SC EPD	Marb EPD	REA EPD	\$ M	\$W	\$B	
+1.28	+0.53	+0.88	+74	+70	+153	

- Granddam 0609 was a Donor for us.
- This bull is moderate framed.
- Heifer bull.



lot 31 WW Validate 2117

Bull Born: 02/23/22 Reg Number: 20491395 Tattoo: 2117

KG JUSTIFIED 3023#
TEF VALIDATE 042
TEF CHRISTINA 310

SITZ STELLAR 726D
WW CHERE 0017
WW CHERE 8017

CONNEALY JUDGMENT
KG MISS MAGIC 1443
CONNEALY CONFIDENCE 0100 #
T E F CHRISTINA 806

MOHNEN SUBSTANTIAL 272 #
SITZ PRIDE 200B
CONNEALY COMMONWEALTH
MA CHERE 3417

Birth Wt	205 Wt	WW Ratio	365 Wt	YW Ratio	Adj Scrotal	Dam Production
65	699	98	1217	100	35.47	1 WR 98
CED EPD	BW EPD	WW EPD	YW EPD	MILK EPD	HP EPD	\$EN
+12	-2.4	+82	+131	+30	+14.8	-23
SC EPD	Marb EPD	REA EPD	\$ M	\$W	\$B	
+1.15	+0.64	+0.72	+91	+92	+142	

- Moderate framed.
- Heifer bull.



lot 33 WW All Pro 2294

Bull Born: 02/22/22 Reg Number: 20509584 Tattoo: 2294

GDAR ALL PRO 519#
GDAR ALL PRO 9203
GDAR PAMELA EVER 812 #

GDAR LOAD UP 7104
GDAR PAMELA EVER 9294
GDAR PAMELA EVER 220 #

SANDPOINT BUTKUS X797 #
GDAR RACHEL 3203
GDAR GAME DAY 449 #
GDAR PAMELA EVER 664

SITZ RELOAD 411C #
GDAR FOREVER LADY 4522
WMR TIMELESS 458 #
GDAR PAMELA EVER 3442

Birth Wt	205 Wt	WW Ratio	365 Wt	YW Ratio	Adj Scrotal	Dam Production
76	757	106	1202	99	39.94	2 WR 102
CED EPD	BW EPD	WW EPD	YW EPD	MILK EPD	HP EPD	\$EN
+12	+0.9	+69	+113	+32	+10.7	-17
SC EPD	Marb EPD	REA EPD	\$ M	\$W	\$B	
+1.71	+0.56	+0.71	+79	+76	+124	

- Heifer bull out of a really good cow family from GDAR.
- Pathfinder granddam calved AI again this year.





lot 34 WW True North 2536
 Bull Born: 02/10/22 Reg Number: 20491382 Tattoo: 2536

S A V RAINFALL 6846
SQUARE B TRUE NORTH 8052
 ELBASTA OF CONANGA 1209

COLEMAN CHARLO 0256 #
 S A V BLACKCAP MAY 4136
 CONNEALY CONSENSUS #
 ELBASTA OF CONANGA 9703
 SITZ DASH 10277 #
 KEL MCC HUSKER GIRL 754-434
 A A R TEN X 7008 S A #
 JM MISS IDEAL 104 #

KEL MCC DASH 3308
TOP NOTCH MISS IDEAL 536 #
 TOP NOTCH MISS IDEAL 350

Birth Wt	205 Wt	WW Ratio	365 Wt	YW Ratio	Adj Scrotal	Dam Production
86	708	99	1276	108	37.03	5 WR 109
CED EPD	BW EPD	WW EPD	YW EPD	MILK EPD	HP EPD	\$EN
+12	-0.9	+58	+108	+35	+10.0	-3
SC EPD	Marb EPD	REA EPD	\$ M	\$W	\$B	
+1.15	+0.70	+0.89	+76	+71	+149	

- Heifer bull.
- Pathfinder dam.



lot 36 WW Outside 2090
 Bull Born: 02/18/22 Reg Number: 20491378 Tattoo: 2090

TEF OUTSIDE 514
A A R OUTSIDE 9052
 A A R ELITE LADY 1005

HA OUTSIDE 3008
 T E F JET PRINCESS 714 #
 SITZ DASH 10277 #
 A A R ELITE LADY 9001 #

CAR EFFICIENT 534 #
WW BEAUTY 2290 #
 WW BEAUTY 0290

K C F BENNETT EFFICIENT
 CAR MISS SUSIE 308 #
 S A V FINAL ANSWER 0035 #
 WW BEAUTY 6290

Birth Wt	205 Wt	WW Ratio	365 Wt	YW Ratio	Adj Scrotal	Dam Production
80	738	103	1221	103	36.89	9 WR 110
CED EPD	BW EPD	WW EPD	YW EPD	MILK EPD	HP EPD	\$EN
+7	+0.5	+65	+124	+22	+21.3	-14
SC EPD	Marb EPD	REA EPD	\$ M	\$W	\$B	
+1.49	+1.07	+0.64	+92	+59	+163	

- Excellent EPD profile.
- Pathfinder Dam who raised Hi Line.
- Hi Line is the great sire to lots 14, 20, 21, 26, 35.
- Top 1% \$M and HP, 5% \$C.



lot 35 WW Hi Line 2865
 Bull Born: 02/09/22 Reg Number: 20491384 Tattoo: 2865

S A V RAINFALL 6846
WW HI LINE 9290
 WW BEAUTY 2290 #

COLEMAN CHARLO 0256 #
 S A V BLACKCAP MAY 4136
 CAR EFFICIENT 534 #
 WW BEAUTY 0290
 MOGCK BULLSEYE #
 ERICA OF ELLSTON J84 #
 SITZ ONWARD 9007
 NA MISS FRONTIER PLAY 696

HOOVER BULLSEYE M122
TOP NOTCH MISS PLAY 865
 NA MISS PLAY ON 1118

Birth Wt	205 Wt	WW Ratio	365 Wt	YW Ratio	Adj Scrotal	Dam Production
78	755	105	1213	102	37.69	3 WR 100
CED EPD	BW EPD	WW EPD	YW EPD	MILK EPD	HP EPD	\$EN
+11	+0.8	+60	+102	+25	+14.3	-2
SC EPD	Marb EPD	REA EPD	\$ M	\$W	\$B	
+0.48	+0.65	+0.49	+88	+62	+116	

- Heifer bull.



lot 37 WW True North 2597
 Bull Born: 01/29/22 Reg Number: 20491390 Tattoo: 2597

S A V RAINFALL 6846
SQUARE B TRUE NORTH 8052
 ELBASTA OF CONANGA 1209

COLEMAN CHARLO 0256 #
 S A V BLACKCAP MAY 4136
 CONNEALY CONSENSUS #
 ELBASTA OF CONANGA 9703

GDAR JUSTIFIED 7144
WW MONTANA ROSE 9597
 WW MONTANA ROSE 5971 #

KG JUSTIFIED 3023 #
 GDAR MISS FOREVER 151
 A A R TEN X 3001 #
 BOYUM 9719 EMBLAZON LADY8023

Birth Wt	205 Wt	WW Ratio	365 Wt	YW Ratio	Adj Scrotal	Dam Production
60	731	103	1213	100	34.67	1 WR 95
CED EPD	BW EPD	WW EPD	YW EPD	MILK EPD	HP EPD	\$EN
+16	-2.0	+60	+117	+34	+12.3	-20
SC EPD	Marb EPD	REA EPD	\$ M	\$W	\$B	
+1.09	+0.53	+0.34	+62	+68	+122	

- Heifer bull.
- Twin to lot 38.





lot 38 **WW True North 2598**
 Bull Born: 01/29/22 Reg Number: 20491391 Tattoo: 2598

S A V RAINFALL 6846
SQUARE B TRUE NORTH 8052
 ELBANNA OF CONANGA 1209

GDAR JUSTIFIED 7144
WW MONTANA ROSE 9597
 WW MONTANA ROSE 5971 #

COLEMAN CHARLO 0256 #
 S A V BLACKCAP MAY 4136
 CONNEALY CONSENSUS #
 ELBASTA OF CONANGA 9703

KG JUSTIFIED 3023 #
 GDAR MISS FOREVER 151
 A A R TEN X 3001 #
 BOYUM 9719 EMBLAZON LADY8023

Birth Wt	205 Wt	WW Ratio	365 Wt	YW Ratio	Adj Scrotal	Dam Production
60	695	100	1202	100	35.67	1 WR 95
CED EPD	BW EPD	WW EPD	YW EPD	MILK EPD	HP EPD	\$EN
+16	-1.9	+60	+117	+33	+12.3	-18
SC EPD	Marb EPD	REA EPD	\$ M	\$W	\$B	
+1.12	+0.52	+0.33	+63	+67	+121	

- Heifer bull.
- Twin to lot 37.



lot 40 **WW Rainmaker 2243**
 Bull Born: 02/08/22 Reg Number: 20493183 Tattoo: 2243

BASIN RAINMAKER 2704
BASIN RAINMAKER 4404
 BASIN JOY 1036

SRS EMPIRE 1047E
SRS CHLOE 9243G
 SRS CHLOE 2206Z

BASIN RAINMAKER P175 #
 BASIN ERICA 7520 BV #
 BASIN PAYWEIGHT 107S #
 BASIN JOY 566T

HA PRIME CUT 4493 #
 BASIN JOYCE S474 #
 TC TOTAL 410 #
 BASIN CHLOE 2P31 #

Birth Wt	205 Wt	WW Ratio	365 Wt	YW Ratio	Adj Scrotal	Dam Production
68	697	98	1252	103	34.49	2 WR 98
CED EPD	BW EPD	WW EPD	YW EPD	MILK EPD	HP EPD	\$EN
+6	+1.4	+70	+116	+30	+10.0	-38
SC EPD	Marb EPD	REA EPD	\$ M	\$W	\$B	
+0.23	+0.40	+0.99	+55	+69	+154	

- Moderate framed.
- Should work on most heifers.



lot 39 **WW Rangeland 2800**
 Bull Born: 02/03/22 Reg Number: 20494486 Tattoo: 2800

BASIN RAINMAKER 4404
ELLINGSON RANGELAND
 EA EMBLYNETTE 7009

SITZ BROKER 12985 #
GDAR FOREVER LADY 98
 GDAR FOREVER LADY 7370

BASIN RAINMAKER 2704
 BASIN JOY 1036
 CTS REMEDY 1101 #
 EA EMBLYNETTE 5241

SITZ INVESTMENT 660Z #
 SITZ BEEBE QUEEN 613 #
 KG JUSTIFIED 3023 #
 GDAR FOREVER LADY 3246

Birth Wt	205 Wt	WW Ratio	365 Wt	YW Ratio	Adj Scrotal	Dam Production
80	718	101	1236	102	36.33	2 WR 97
CED EPD	BW EPD	WW EPD	YW EPD	MILK EPD	HP EPD	\$EN
+0	+3.1	+71	+121	+33	+17.2	-22
SC EPD	Marb EPD	REA EPD	\$ M	\$W	\$B	
+1.91	+0.73	+0.65	+90	+71	+148	

- Cow bull.
- Moderate framed.
- Top 2% \$M and HP.



lot 41 **WW Prince 2945**
 Bull Born: 02/09/22 Reg Number: 20520848 Tattoo: 2945

CONNEALY CONFIDENCE PLUS #
MOHNER PRINCE 2959
 MOHNER ABIGALE 1170

MOHNER IMPRESSIVE 1093 #
MOHNER JILT 945
 MOHNER JILT 2493

CONNEALY CONFIDENCE 0100 #
 ELBANNA OF CONANGA 1209
 S A V PIONEER 7301 #
 MOHNER ABIGALE 2006

BASIN EXCITEMENT #
 MOHNER JILT 787 #
 BRUNS UPPERCUT 610
 MOHNER JILT 2378

Birth Wt	205 Wt	WW Ratio	365 Wt	YW Ratio	Adj Scrotal	Dam Production
88	736	103	1194	101	37.00	6 WR 99
CED EPD	BW EPD	WW EPD	YW EPD	MILK EPD	HP EPD	\$EN
+5	+1.0	+61	+109	+41	+14.1	-14
SC EPD	Marb EPD	REA EPD	\$ M	\$W	\$B	
+0.71	+0.74	+0.63	+80	+74	+119	

- Cow bull.
- Cow has a bit more frame, good overall structure, stands on excellent feet and legs.





lot 42 WW Growth Fund 2843
 Bull Born: 02/07/22 Reg Number: 20493371 Tattoo: 2843

BASIN PAYWEIGHT 1682#
DEER VALLEY GROWTH FUND
 DEER VALLEY RITA 36113

WW DEFINITIVE 9097
WW ECLIPSE DEFINITIVE 3843 #
 BOYUM 8425 OF 1323 EM8023

BASIN PAYWEIGHT 0065 #
 21AR O LASS 7017
 PLATTEMERE WEIGH UP K360 #
 DEER VALLEY RITA 9457

S A V FINAL ANSWER 0035 #
 WW PRINCESS 6097 #
 B C EMBLAZON 854E 8023
 BOYBOY 1323 OF 3452

Birth Wt	205 Wt	WW Ratio	365 Wt	YW Ratio	Adj Scrotal	Dam Production
82	707	99	1152	98	34.95	8 WR 105
CED EPD	BW EPD	WW EPD	YW EPD	MILK EPD	HP EPD	\$EN
+9	+0.6	+66	+115	+34	+9.4	-16
SC EPD	Marb EPD	REA EPD	\$ M	\$ W	\$ B	
+.44	+.01	+.58	+72	+74	+100	

- Pathfinder dam is an excellent cow out of Definitive.
- Heifer bull.
- I like this bull more everyday.
- Ranks top10% \$W and CEM.
- Heifer bull.



lot 44 WW Rainmaker 2929
 Bull Born: 02/04/22 Reg Number: 20493154 Tattoo: 2929

BASIN RAINMAKER 2704
BASIN RAINMAKER 4404
 BASIN JOY 1036

ELLINGSON CHAPS 4095 #
WW BARBARAMERE 9229
 WW BARBARAMERE JET 3229 #

BASIN RAINMAKER P175 #
 BASIN ERICA 7520 BV #
 BASIN PAYWEIGHT 107S #
 BASIN JOY 566T

S A V RESOURCE 1441 #
 E A BLACKCAP 0360 #
 HARRISON BROADCAST 9101
 OX BOW BARBARAMERE JET 229 #

Birth Wt	205 Wt	WW Ratio	365 Wt	YW Ratio	Adj Scrotal	Dam Production
78	687	96	1263	104	34.86	2 WR 102
CED EPD	BW EPD	WW EPD	YW EPD	MILK EPD	HP EPD	\$EN
+8	-0.3	+58	+109	+36	+10.5	-23
SC EPD	Marb EPD	REA EPD	\$ M	\$ W	\$ B	
+.62	+.32	+.52	+64	+65	+120	

- Heifer bull.



lot 43 WW Crackerjack 2061
 Bull Born: 02/08/22 Reg Number: 20494457 Tattoo: 2061

MUSGRAVE 316 STUNNER
MUSGRAVE CRACKERJACK
 MUSGRAVE RITO JET A649

ELLINGSON CHAPS 4095 #
WW MONTANA ROSE 0619
 WW MONTANA ROSE 6619

LD CAPITALIST 316 #
 MCATL BLACKBIRD 831-1378 #
 MUSGRAVE BIG SKY #
 G C F MISS NEW LEVEL R216

S A V RESOURCE 1441 #
 E A BLACKCAP 0360 #
 A A R TEN X 3001 #
 BOYUM 9719 EMBLAZON LADY8023

Birth Wt	205 Wt	WW Ratio	365 Wt	YW Ratio	Adj Scrotal	Dam Production
72	695	98	1135	94	34.99	1 WR 98
CED EPD	BW EPD	WW EPD	YW EPD	MILK EPD	HP EPD	\$EN
+12	-0.2	+64	+110	+27	+8.4	-12
SC EPD	Marb EPD	REA EPD	\$ M	\$ W	\$ B	
+.74	+.30	+.85	+70	+67	+126	

- Heifer bull.



lot 45 WW Crackerjack 2071
 Bull Born: 02/12/22 Reg Number: 20494465 Tattoo: 2071

MUSGRAVE 316 STUNNER
MUSGRAVE CRACKERJACK
 MUSGRAVE RITO JET A649

A A R TEN X 3001 #
WW MONTANA ROSE 5971 #
 BOYUM 9719 EMBLAZON LADY8023

LD CAPITALIST 316 #
 MCATL BLACKBIRD 831-1378 #
 MUSGRAVE BIG SKY #
 G C F MISS NEW LEVEL R216

A A R TEN X 7008 S A #
 WOODLAND BURGESS PRIDE 113 #
 B C EMBLAZON 854E 8023
 GNERERS BETH 326

Birth Wt	205 Wt	WW Ratio	365 Wt	YW Ratio	Adj Scrotal	Dam Production
96	715	100	1240	105	35.10	6 WR 104
CED EPD	BW EPD	WW EPD	YW EPD	MILK EPD	HP EPD	\$EN
+9	+0.5	+60	+118	+42	+10.8	-33
SC EPD	Marb EPD	REA EPD	\$ M	\$ W	\$ B	
+.77	+.66	+.49	+50	+68	+151	

- Heifer bull.
- Pathfinder dam.
- Our Crackerjack daughters look like they will make some nice cows. They appear to have good feet, legs, disposition, teat, and utters.





lot 46 WW Rainmaker 2918
 Bull Born: 02/11/22 Reg Number: 20493201 Tattoo: 2918

BASIN RAINMAKER 2704
BASIN RAINMAKER 4404
 BASIN JOY 1036

BASIN RAINMAKER P175 #
 BASIN ERICA 7520 BV #
 BASIN PAYWEIGHT 107S #
 BASIN JOY 566T

R B TOUR OF DUTY 177 #
WW EISA ERICA 6918
 ICC EISA ERICA 2918

WERNER WAR PARTY 2417 #
 B A LADY 6807 305
 HOOVER DAM #
 MS PCAR MARRIOTT 4039 7152

Birth Wt	205 Wt	WW Ratio	365 Wt	YW Ratio	Adj Scrotal	Dam Production
80	699	98	1165	99	36.06	5 WR 100
CED EPD	BW EPD	WW EPD	YW EPD	MILK EPD	HP EPD	\$EN
+2	+3.0	+66	+112	+34	+9.3	-14
SC EPD	Marb EPD	REA EPD	\$ M	\$W	\$B	
+1.43	+0.39	+0.88	+0.72	+0.69	+1.43	

• Cow bull.



lot 48 WW Rainmaker 2103
 Bull Born: 02/06/22 Reg Number: 20493187 Tattoo: 2103

BASIN RAINMAKER 2704
BASIN RAINMAKER 4404
 BASIN JOY 1036

BASIN RAINMAKER P175 #
 BASIN ERICA 7520 BV #
 BASIN PAYWEIGHT 107S #
 BASIN JOY 566T

GDAR LOAD UP 7104
GDAR BLACKCAP LADY 9103
 GDAR BLACKCAP LADY 6124

SITZ RELOAD 411C #
 GDAR FOREVER LADY 4522
 GDAR TABASCO 3111
 GDAR BLACKCAP LADY 164

Birth Wt	205 Wt	WW Ratio	365 Wt	YW Ratio	Adj Scrotal	Dam Production
76	664	93	1163	96	34.43	2 WR 98
CED EPD	BW EPD	WW EPD	YW EPD	MILK EPD	HP EPD	\$EN
+11	-1.2	+54	+96	+37	+15.7	-8
SC EPD	Marb EPD	REA EPD	\$ M	\$W	\$B	
+0.35	+0.28	+0.41	+0.90	+0.69	+1.02	

• Moderate framed Heifer bull.



lot 47 WW True North 2799
 Bull Born: 02/06/22 Reg Number: 20491383 Tattoo: 2799

S A V RAINFALL 6846
SQUARE B TRUE NORTH 8052
 ELBASTA OF CONANGA 1209

COLEMAN CHARLO 0256 #
 S A V BLACKCAP MAY 4136
 CONNEALY CONSENSUS #
 ELBASTA OF CONANGA 9703

GDAR REGULATOR 364 #
GDAR CJD PRIMROSE 7799
 GDAR CJD PRIMROSE 2752

WMR TIMELESS 458 #
 GDAR BLACKCAP LADY 071
 GDAR JUSTICE 622 #
 GDAR CJD PRIMROSE 6635 #

Birth Wt	205 Wt	WW Ratio	365 Wt	YW Ratio	Adj Scrotal	Dam Production
90	711	99	1149	97	37.43	3 WR 101
CED EPD	BW EPD	WW EPD	YW EPD	MILK EPD	HP EPD	\$EN
+8	+0.8	+57	+107	+36	+15.5	-13
SC EPD	Marb EPD	REA EPD	\$ M	\$W	\$B	
+0.91	+0.72	+0.27	+0.78	+0.65	+1.32	

• Heifer bull. Good footed deep bodied dam.



lot 49 WW Validate 2262
 Bull Born: 02/25/22 Reg Number: 20491386 Tattoo: 2262

KG JUSTIFIED 3023#
TEF VALIDATE 042
 TEF CHRISTINA 310

CONNEALY JUDGMENT
 KG MISS MAGIC 1443
 CONNEALY CONFIDENCE 0100 #
 T E F CHRISTINA 806

ELLINGSON HOMESTEAD 6030
SRS MANOR 9262G
 SRS MANOR 5255C

CTS REMEDY 1T01 #
 EA ERICA 1082
 CONNEALY BLACK GRANITE #
 SRS MANOR 3200A

Birth Wt	205 Wt	WW Ratio	365 Wt	YW Ratio	Adj Scrotal	Dam Production
76	700	98	1263	104	35.04	2 WR 99
CED EPD	BW EPD	WW EPD	YW EPD	MILK EPD	HP EPD	\$EN
+7	+0.2	+77	+140	+28	+13.0	-29
SC EPD	Marb EPD	REA EPD	\$ M	\$W	\$B	
+0.80	+0.84	+0.71	+0.68	+0.75	+1.69	

• Heifer bull.
 • Excellent bull to end the sale on. Length, thickness and very good structure.



WHY WE TEST WITH HD50K™ FROM ZOETIS



Powered by HD50K™ from Zoetis, our cattle sell with genomic-enhanced expected progeny differences (GE-EPDs).

With GE-EPDs, we're confident that customers like you can minimize risk in their investment — and enhance the productivity of your cattle.

The benefits of buying HD50K-tested bulls and heifers goes beyond added accuracy for the complete range of traits for more productive daughters and progeny. You'll know early on what that animal is likely to transmit to its offspring and potential for performance in the feedlot and on the rail. You can also match the HD50K tested sires you buy from us to replacement heifers — through GeneMax® Advantage™ — to make better-informed breeding and management decisions down the road.

Knowing an animal's potential. Continuous progress of your herd. That's why we test with HD50K.


For more information: Contact your Zoetis representative
 Call Zoetis customer service at 877-233-3362
 Email Zoetis at geneticservice@zoetis.com
<https://www.zoetis.com/animal-genetics/beef/index.aspx>

All trademarks are the property of Zoetis Services LLC or a related company or a licensor unless otherwise noted. GeneMax is a registered trademark of Angus Genetics, Inc. ©2019 Zoetis Services LLC. All rights reserved. 50K-00020

Number of progeny records in conventional genetic evaluation needed to achieve the same accuracy as GE-EPDs powered by HD50K

Trait	Progeny Equivalents
Heifer Pregnancy (HP)	17
Calving Ease Direct (CED)	26
Birth Weight (BW)	23
Milk	36
Docility (Doc)	12
Claw Set (Claw)	10
Foot Angle (Foot)	10
Scrotal Circumference (SC)	15
Weaning Weight (WW)	27
Yearling Weight (YW)	23
Dry Matter Intake (DMI)	12
Yearling Height (YH)	17
Mature Weight (MW)	15
Carcass Weight (CW)	15
Marbling (Marb)	11
Ribeye Area (RE)	17
Fat Thickness (Fat)	14





ABOVE AVERAGE GOALS REQUIRE TARGETED BULLS


Aim High

The Targeting the Brand™ logo highlights registered Angus bulls with greater genetic potential to produce calves that meet the most challenging specifications of the *Certified Angus Beef*® brand.

Only 1 in 4 non-parent Angus bulls qualify.

Minimum Genetic Requirements

Marbling EPD (Marb)	+0.65
Dollar Grid Carcass Index (\$G)	+55.0



For more information on Targeting the Brand™ visit CABcattle.com.

American Angus Association Selection Tools

Calving Ease Direct (CED), is expressed as a difference in percentage of unassisted births, with a higher value indicating greater calving ease in first calf heifers. It predicts the average difference in ease with which a sire's calves will be born when he is bred to first-calf heifers.

Birth Weight EPD (BW), expressed in pounds, is a predictor of a sire's ability to transmit birth weight to his progeny compared to that of other sires.

Weaning Weight EPD (WW), expressed in pounds, is a predictor of a sire's ability to transmit weaning growth to his progeny compared to that of other sires.

Yearling Weight EPD (YW), expressed in pounds, is a predictor of a sire's ability to transmit yearling growth to his progeny compared to that of other sires.

Maternal Milk EPD (Milk), is a predictor of a sire's genetic merit for milk and mothering ability as expressed in his daughters compared to daughters of other sires. In other words, it is that part of a calf's weaning weight attributed to milk and mothering ability.

Cow Energy Value (\$EN), expressed in dollars savings per cow per year, assesses differences in cow energy requirements as an expected dollar savings difference in daughters of sires. A larger value is more favorable when comparing two animals (more dollars saved on feed energy expenses). Components for computing the cow \$EN savings difference include lactation energy requirements and energy costs associated with differences in mature cow size.

Heifer Pregnancy (HP) is used as a tool to increase the chance of a sire's daughters becoming pregnant during a normal breeding season. A higher EPD is the more favorable direction for selection pressure. As with other EPDs, the relative difference among sires is of importance rather than the absolute value.

Residual Average Daily Gain (RADG) expressed in pounds per day, is a predictor of a sire's genetic ability for post weaning gain in future progeny compared to that of other sires, given a constant amount of feed consumed.

Marbling EPD (Marb), expressed as a fraction of the difference in USDA marbling score of a sire's progeny compared to progeny of other sires.

Ribeye Area EPD (RE), expressed in square inches, is a predictor of the difference in ribeye area of a sire's progeny compared to progeny of other sires.

Fat Thickness EPD (Fat), expressed in inches, is a predictor of the differences in external fat thickness at the 12th rib (as measured between the 12th and 13th ribs) of a sire's progeny compared to progeny of other sires.

\$Value indexes, are multi-trait selection indexes to assist beef producers by adding simplicity to genetic selection decisions. \$Values are reported in dollars per head, where a higher value is more favorable. The \$Value is an estimate of how future progeny of each sire are expected to perform, on average, compared to progeny of other sires in the database if the sires were randomly mated to cows and if calves were exposed to the same environment.

Maternal Weaned Calf Value (\$M), an index expressed in dollars per head, predicts profitability differences in progeny due to genetics from conception to weaning. \$M is built off of a self-replacing herd model where commercial cattlemen replace 25% of their breeding females in the first generation and 20% in subsequent generations. Remaining cull females and all male progeny are sold as feeder calves. Increased selection pressure on \$M aims to decrease overall mature cow size and improve foot structure and fertility while maintaining weaning weights consistent with today's production.

Weaned Calf Value (\$W), an index value expressed in dollars per head, is the expected average difference in future progeny performance for preweaning merit. \$W includes both revenue and cost adjustments associated with differences in birth weight, weaning direct growth, maternal milk, and mature cow size.

Beef Value (\$B), an index value expressed in dollars per head, is the expected average difference in future progeny performance for postweaning and carcass value compared to progeny of other sires.

www.Angus.org





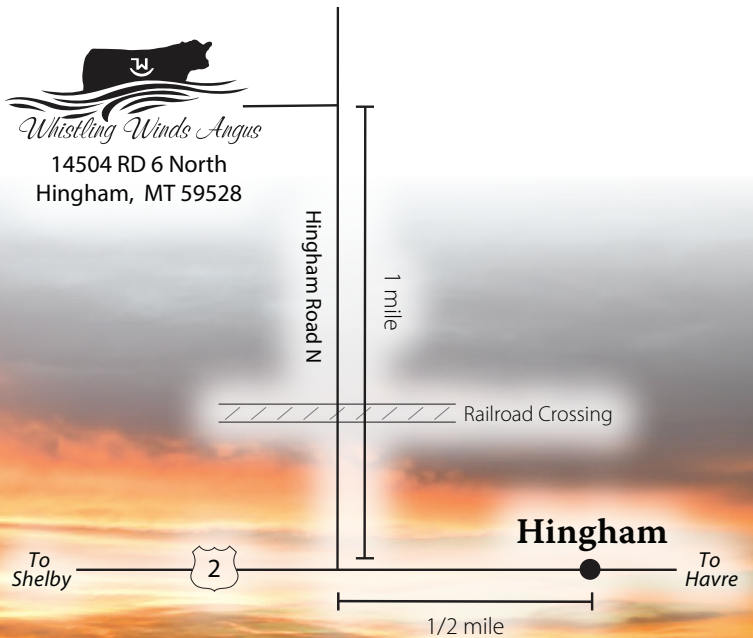
Whistling Winds Angus

Sale Notes:



Whistling Winds Angus

14504 RD 6 North
Hingham, MT 59528



Thanks for Joining Us!



Whistling Winds Angus

David Sattoriva
14504 Rd 6 North
Hingham, MT 59528

Presorted
FIRST CLASS
US Postage
Paid
Ballyhoo Printing
59457

FIRST CLASS



Annual Production Sale | Monday 1:00
March 20

at the Ranch
14504 Road 6 North
Hingham, Montana 2023

Offering . . .
50 BULLS
Including 30 Heifer Bulls



www.WhistlingWindsAngus.com